



## Dear Families,

This is an exciting time to be part of OLV. As many of you know, we concluded our planning study to hear your thoughts about adding new classrooms for junior high students. After positive feedback, we decided to proceed with a capital campaign. These classrooms will be the next major development in OLV's 60-year history, along with the Early Childhood Center and the Art Center .

Although there is much excitement, there are also many good questions regarding OLV's future. Our planning study revealed questions ranging from logistics to security, maintenance to staffing. As we continue to plan for the future, my goal is to communicate openly and often with our community; we have a good trajectory, and I want to share it.

Please spend some time reading the FAQ below to get a sense of our school's direction and our current plans. If you have any more questions or considerations, please be sure to reach out at [campaign@ourladyvictory.org](mailto:campaign@ourladyvictory.org). We wanted to hear your feedback during our planning study, and we still want to hear your feedback as we continue our school's improvement to better educate hearts, minds and souls for eternity.

Sincerely yours in Christ,

A handwritten signature in black ink that reads "Justin Matias".

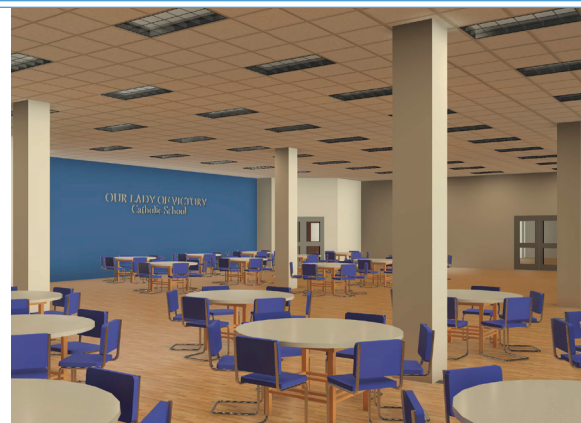
Justin Matias  
Principal



(over)

## ***What is the goal of this campaign?***

This campaign will allow OLV to create new junior high classrooms to add space in each student's learning environment and increase educational opportunities for everyone. After reviewing several options, the most feasible way forward is to construct classrooms on the second floor of the Cathedral Center. The costs for construction and furnishing it with desks, chairs and other learning equipment is \$4 million. To build the same space from scratch in our field would double the cost due to additional foundation, plumbing and electrical work. Construction is expected to begin in August this year and conclude in August 2025, in time to launch the new school year.



## ***How did you decide on this goal?***

The idea for using the Cathedral Center originally came from Monsignor Harrold about 15 years ago when he purchased the mall. Since then, OLV has been working on renovating the downstairs in its entirety. About a year ago, we began discussing building options and sent out a short survey to our school families to hear initial impressions on our goal. After these largely positive responses, we contracted the Steier Group to organize a comprehensive planning study in March 2024. They delivered their final report on April 24, and both the school's Advisory Council and the parish's Finance Council decided to proceed with a capital campaign.

## ***Why is now a good time to add classrooms?***

Victoria's residents want to send their children to OLV because of its Catholicity and rigorous academics, but this popularity comes with challenges. Due to OLV's increased enrollment, we've had to expand two grade levels into three classrooms to ensure that each student's needs are met by our high-quality faculty. We are currently out of usable rooms.

Now is the perfect time to add new classrooms so that each grade level can be afforded the space to do the same, reducing the student-teacher ratio for all our students and providing a better learning environment. K-5th grade are at peak enrollment and will provide us with a solid foundation for our new build.

## ***How will OLV afford maintenance costs associated with a new building and new teachers?***

OLV is dedicated to providing its families with an affordable Catholic education, seen in its below-average tuition rates and available scholarships. As such, we will seek to meet the financial needs of our school without burdening our families with unsustainable tuition rates. New maintenance costs and additional teachers may result in a slight tuition increase, but any increase will be mindful of our families' needs and our sincerest desire not to price families out.

## ***What will the junior high school's day look like in terms of drop-off and class schedule?***

We are reviewing options for student drop-off and pick-up and will likely split drop-off and pick-up locations. The junior high will continue to use the Cathedral Center's covered parking, and the remainder of grade levels may use a different part of campus.

We are aware of the increased travel time from the new classrooms in the Cathedral Center to other destinations (such as the Cathedral, cafeteria and gym). Passing periods will account for longer walks while keeping students on an efficient class schedule to maximize learning.

## ***What safety and security measures will be included on this side of campus?***

We are in constant communication with both our Safety Coordinator and the Impact Committee's Safety Expert to care for the students entrusted to us. Our current design plans include a new student entry, controlled access doors and a school-dedicated front office with visuals on the rest of campus and crosswalk. We will continue to dedicate attention to ensuring a safe learning environment as we have in the past with our campus's fence, cameras and emergency buttons.

## ***Our current campus has looked the same for so long. Will OLV retain its essence?***

Yes, OLV will keep its essence as neither its mission nor its location will change. This project will help us to further fulfill our mission by being good stewards of the space that we have and using it for the benefit of our students. Furthermore, OLV has had a history of improving its campus – the cafeteria, Early Childhood Development Center and Art Center were all constructed after we opened in 1957 – and it has renovated several of its spaces, such as the gym and library. This construction project is simply the next in OLV's long history.



THE CATHEDRAL OF  
**OUR LADY OF VICTORY**

1311 E. Mesquite Ln., Victoria, TX 77901  
361.575.5391 | [campaign@ourladyvictory.org](mailto:campaign@ourladyvictory.org)