

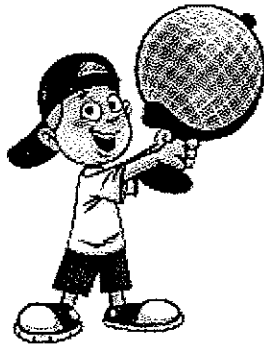
Place Contestant ID Label HERE
BEFORE Contest Begins.



Maps, Graphs, & Charts

DISTRICT Contest

Grades 4/5



2017

Score: _____

(Please do not open test until the signal is given to begin.)



Farming Report

Courtland Agricultural District III

County	Average Farm Size (in acres)	Primary Crops						
		Barley	Corn	Oats	Potatoes	Soybeans	Wheat	
Andrews	1,270	Y	Y					Y
Chambers	218					Y		
Fisk	550			Y				
Monroe	823	Y	Y		Y	Y		
Ross	418		Y	Y				
Sumner	646		Y	Y				Y
Vincent	497		Y					Y

Farming Report

1. The average number of acres of a farm in Monroe County is
 - A. 418.
 - B. 550.
 - C. 646.
 - D. 823.

2. Which of these crops is important in Ross County?
 - A. wheat
 - B. soybeans
 - C. oats
 - D. potatoes

3. In which of these counties are the most different types of crops grown?
 - A. Vincent
 - B. Sumner
 - C. Fisk
 - D. Chambers

4. Average farm size is largest in which of these counties?
 - A. Andrews
 - B. Sumner
 - C. Monroe
 - D. Vincent

5. Which of the following crops are grown in the fewest counties?
 - A. barley
 - B. corn
 - C. oats
 - D. wheat

6. Which of these statements is true?
 - A. The county with the largest farms also grows the most different kinds of crops.
 - B. The average size of farms is larger in Fisk County than it is in Sumner County.
 - C. Corn is grown in more of the counties than any of the other crops.
 - D. Barley and soybeans are both grown in the same two counties.

Atlas questions - Europe

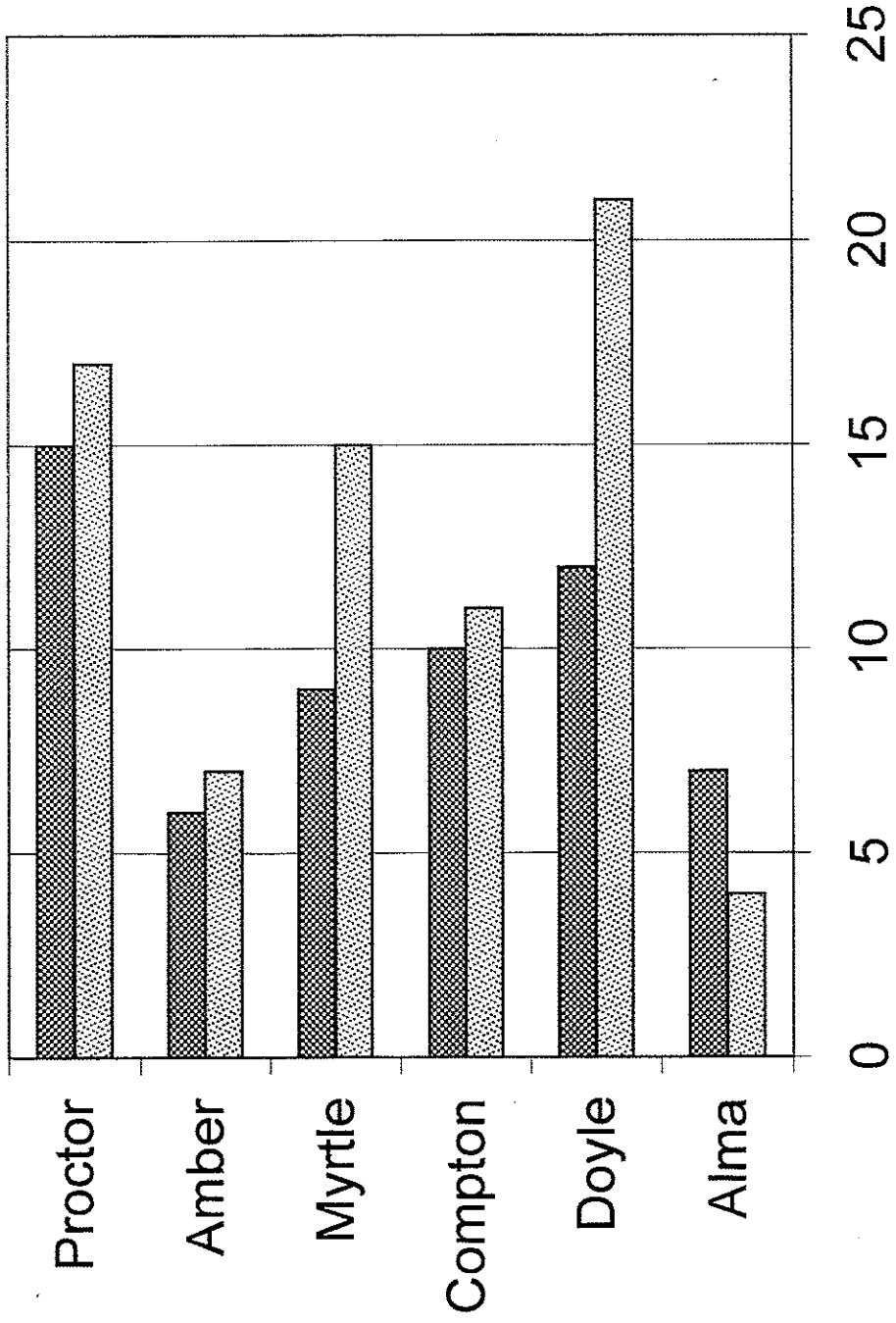
7. Which of these countries does not share any border with Germany?
 - A. Belgium
 - B. Poland
 - C. Italy
 - D. Switzerland

8. Which of these Russian cities is largest?
 - A. St. Petersburg
 - B. Tula
 - C. Yaroslavl
 - D. Smolensk

9. Germany's climate is considered
 - A. continental.
 - B. dry.
 - C. mild.
 - D. polar.

Regional Emergency Station County Service Report

Counties



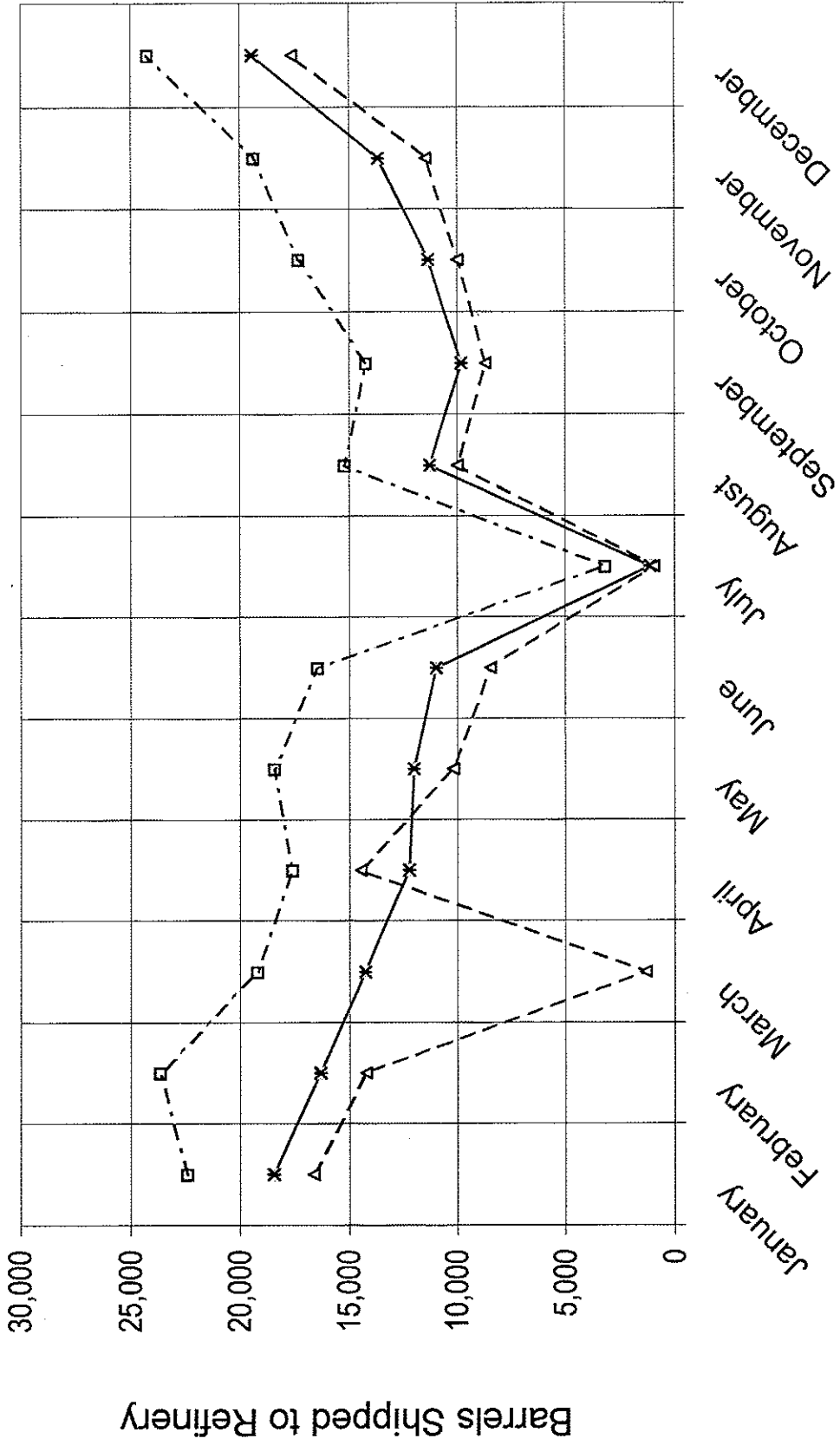
Service Dispatches

10. How many feet above sea level is most of the land around London in the United Kingdom?
- | | |
|-----------------|-------------------|
| A. 0 to 500 | C. 1,000 to 2,000 |
| B. 500 to 1,000 | D. 2,000 to 5,000 |
11. In which of these countries is more of the land desert or semi-desert?
- | | |
|-----------|------------------|
| A. Sweden | C. Great Britain |
| B. Spain | D. France |
12. One metal resource found in Italy is
- | | |
|----------|---------------|
| A. zinc. | C. silver. |
| B. tin. | D. manganese. |
13. One European country that is not a member of the European Union is
- | | |
|------------|-------------|
| A. Ireland | C. Norway |
| B. Greece | D. Portugal |

Regional Emergency Station

14. How many fire trucks did the Emergency Station send to Proctor County?
- | | |
|-------|-------|
| A. 20 | C. 15 |
| B. 17 | D. 12 |
15. How many counties received fewer than 10 ambulances from the Emergency Station?
- | | |
|------|------|
| A. 0 | C. 2 |
| B. 1 | D. 3 |
16. Which of these counties received more ambulances than fire trucks?
- | | |
|------------|------------|
| A. Doyle | C. Alma |
| B. Compton | D. Proctor |
17. Which of these counties received 15 fire trucks from the Emergency Station?
- | | |
|------------|------------|
| A. Proctor | C. Compton |
| B. Doyle | D. Myrtle |
18. Which of the following counties had the biggest difference between the number of ambulances dispatched and the number of fire trucks?
- | | |
|----------|------------|
| A. Alma | C. Compton |
| B. Amber | D. Proctor |
19. Which of these statements is false?
- | |
|---|
| A. None of the counties received the same number of ambulances as it did fire trucks. |
| B. The Emergency Station sent 11 ambulances to Compton County. |
| C. Amber County received more fire trucks than Alma County did. |
| D. The Emergency Station sent more than 20 service dispatches to Myrtle County. |

Desmond Islands Oil Production



--□-- Rig #1 --*-- Rig #2 --△-- Rig #3







Desmond Islands Oil Production

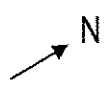
20. In how many months did Rig #1 ship fewer than 15,000 barrels of oil to the refinery?
A. 0
B. 1
C. 2
D. 3
21. In which of these months did Rig #3 produce more oil than Rig #2 did?
A. January
B. April
C. June
D. October
22. Approximately how many barrels of oil did Rig #2 ship to the refinery in September?
A. 5,000
B. 9,000
C. 10,000
D. 14,000
23. In which of the following months did production at Rig #1 increase most from the month before?
A. December
B. November
C. May
D. March
24. In which of the following months was the most oil shipped from Rig #2?
A. November
B. August
C. May
D. March
25. The largest amount of oil shipped from Rig #3 in any one month was approximately
A. 24,000 barrells.
B. 16,000 barrells.
C. 19,000 barrells.
D. 17,500 barrells.
26. In which of these months did production decrease from the month before at all three rigs?
A. February
B. May
C. June
D. October
27. Approximately how many more barrells of oil did Rig #1 ship in its biggest month of production than it did in its smallest month?
A. 24,000
B. 21,000
C. 14,000
D. 10,000

Atlas questions - Australia and Oceania

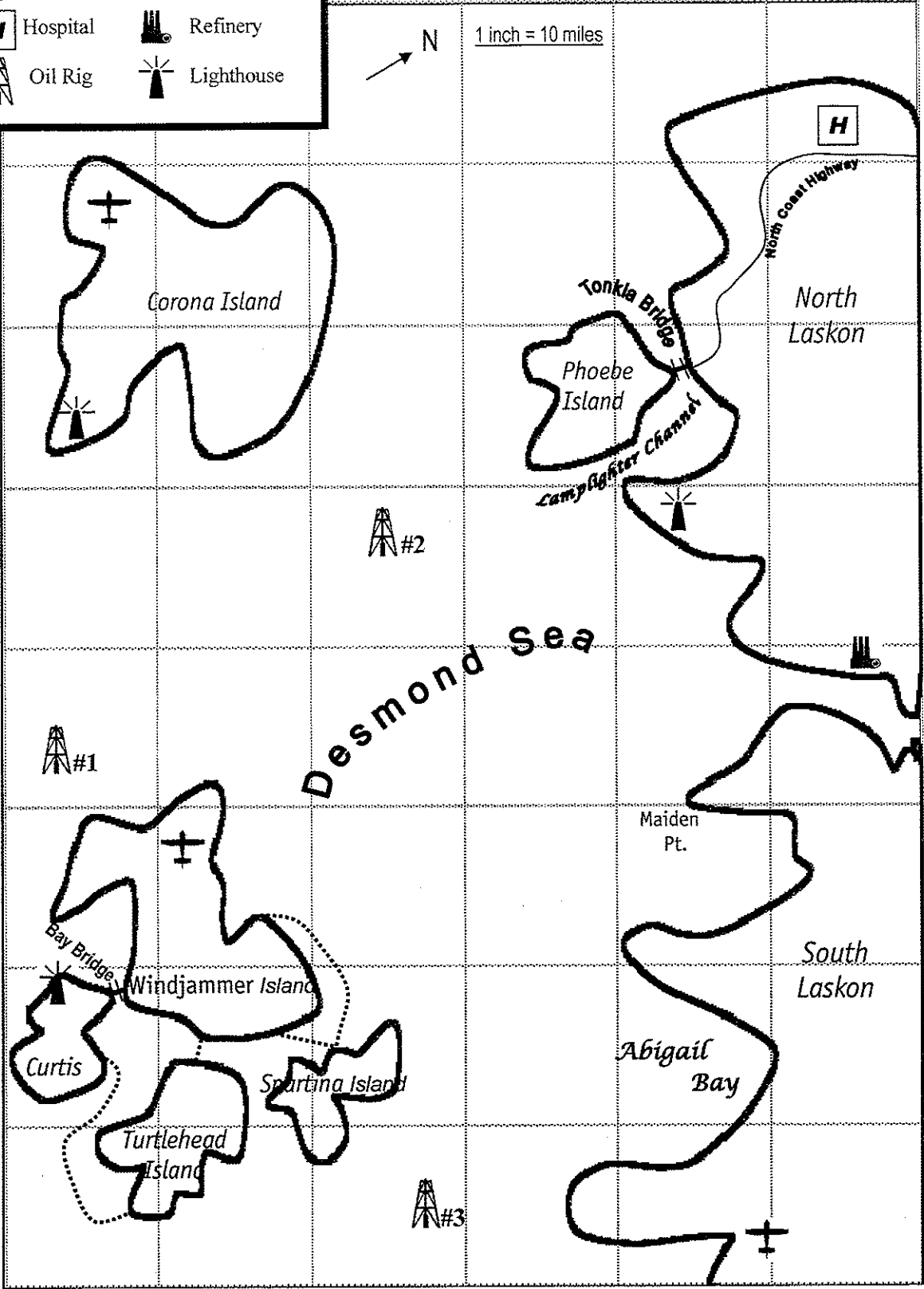
28. The direction from Sydney, Australia, to Melbourne is
A. southwest.
B. northeast.
C. southeast.
D. northwest.
29. The height above sea level of Uluru, also known as Ayers Rock, is
A. 867 feet.
B. 2844 meters.
C. 2844 feet.
D. over 1500 meters.

Desmond

	Airport		Ferry Route
	Hospital		Refinery
	Oil Rig		Lighthouse



1 inch = 10 miles



A
B
C
D
E
F
G
H

1 2 3 4 5 6

30. Longitude 130°E intersects Latitude 20°S in the
- | | |
|------------------------------------|-------------------|
| A. island of New Guinea. | C. Tanami Desert. |
| B. Great Dividing Range mountains. | D. Indian Ocean. |
31. Most of the South Island of New Zealand receives _____ inches of precipitation each year.
- | | |
|-------------|-------------|
| A. 10 to 20 | C. 40 to 80 |
| B. 20 to 40 | D. over 80 |
32. The people indigenous to the New Zealand Islands are part of the Polynesian group. They are called
- | | |
|---------------|---------------|
| A. Hawaiians. | C. Samoans. |
| B. Maori. | D. Tahitians. |
33. New Zealand is separated from Australia by the _____ Sea.
- | | |
|-----------|------------|
| A. Timor | C. Coral |
| B. Tasman | D. Arafura |

Desmond

34. Which of these features is found along the North Coast Highway?
- | | |
|-------------|---------------|
| A. airport | C. lighthouse |
| B. hospital | D. refinery |
35. Approximately how far is the lighthouse at Lamplighter Channel from the one on Corona Island?
- | | |
|------------|-------------|
| A. 4 miles | C. 40 miles |
| B. 5 miles | D. 50 miles |
36. The map feature found in grid section D3 is
- | | |
|------------------------------|-----------------|
| A. Corona Island lighthouse. | C. Abigail Bay. |
| B. Phoebe Island. | D. Oil Rig #2. |
37. Which of these locations is closest to 30 miles from the refinery?
- | | |
|------------------|------------------------------|
| A. Tonkla Bridge | C. Maiden Point |
| B. Oil Rig #2 | D. Windjammer Island Airport |
38. Which of these other islands is connected to Curtis island by a ferry?
- | | |
|---------------|---------------|
| A. Windjammer | C. Spartina |
| B. Phoebe | D. Turtlehead |
39. Which island has both a lighthouse and an airport?
- | | |
|---------------|-----------|
| A. Windjammer | C. Curtis |
| B. Spartina | D. Corona |
40. Which of the following locations is farthest south?
- | | |
|-----------------------|-----------------|
| A. Oil Rig #1 | C. Maiden Point |
| B. Windjammer airport | D. Oil Rig #3 |

Atlas questions - World

41. Which of these South American countries has no ocean coastline?
A. Argentina
B. Bolivia
C. Brazil
D. Chile
42. Average January temperatures in most of the southern part of Africa are
A. 16° to 27° Celsius.
B. over 80° Fahrenheit.
C. 40° to 60° Fahrenheit.
D. 4° to 16° Celsius.
43. Which of these languages is not Germanic?
A. Dutch
B. English
C. French
D. Swedish
44. The plate of the earth's crust that is found along the western edge of South America is the
A. Australian.
B. Nazca.
C. Pacific.
D. Caribbean.
45. In which of these areas are the most fish caught each year?
A. northeastern Pacific Ocean
B. Indian Ocean
C. southern Atlantic Ocean
D. western Pacific Ocean
46. The most widespread economic use of land in Australia is for
A. commercial farming.
B. forestry.
C. nomadic herding.
D. ranching.
47. The average number of years a person living at the southern tip of Africa is expected to live is
A. less than 45.
B. 45 to 55.
C. 55 to 65.
D. 65 to 75.
48. In 1925, the part of the world's population that lived in rural areas was
A. 50.8%.
B. 20%.
C. 49.2%.
D. 80%.
49. Which of these statements is false?
A. The highest elevations of both North and South America are found on the western sides of the continents.
B. Most surface currents in the world's oceans move in circular patterns.
C. The continent of Australia lies across the Equator.
D. Most of the land in the Amazon Basin is covered by tropical rainforest.
50. Which of these countries is the world's top producer of copper?
A. Chile
B. Peru
C. Russia
D. United States

PSIA Maps, Graphs & Charts – Grades 4/5 Contest

Contestant Answer Sheet

CONTESTANT ID#: _____

GRADE LEVEL: _____

INSTRUCTIONS: Place the CAPITAL letter of each answer choice (A, B, C, or D) in the blank corresponding to the test item number. **SCORING:** +5 for each correct answer; -2 for each incorrect answer; no deductions for skipped or unanswered items. Any mark on a space counts as an attempt.

ANSWER	ANSWER	ANSWER
1. _____	18. _____	35. _____
2. _____	19. _____	36. _____
3. _____	20. _____	37. _____
4. _____	21. _____	38. _____
5. _____	22. _____	39. _____
6. _____	23. _____	40. _____
7. _____	24. _____	41. _____
8. _____	25. _____	42. _____
9. _____	26. _____	43. _____
10. _____	27. _____	44. _____
11. _____	28. _____	45. _____
12. _____	29. _____	46. _____
13. _____	30. _____	47. _____
14. _____	31. _____	48. _____
15. _____	32. _____	49. _____
16. _____	33. _____	50. _____
17. _____	34. _____	

SCORE Initials

Grader 1: _____

Grader 1: _____

Grader 1: _____

Official Score: _____

PSIA Maps, Graphs & Charts Contest
Grades 4-5 DISTRICT —2017
Answer Key

Page number references in parentheses are found only in the 2008 or NEWER editions of the *Nystrom Desk Atlas*. **Scoring:** +5 for each correct answer; -2 for each incorrect answer. No points are deducted for skipped or unanswered items. Deduct 2 points for erasures/mark-outs not resulting in a correct answer.

- | | | |
|-------------|-------------|------------|
| 1. D | 18. A | 35. C |
| 2. C | 19. B | 36. D |
| 3. B | 20. C | 37. B |
| 4. A | 21. B | 38. D |
| 5. A | 22. C | 39. D |
| 6. C | 23. A | 40. A |
| 7. C (134) | 24. D | 41. B (8) |
| 8. A (135) | 25. D | 42. B (20) |
| 9. C (140) | 26. C | 43. C (43) |
| 10. A (138) | 27. B | 44. B (16) |
| 11. B (136) | 28. A (172) | 45. D (19) |
| 12. D (142) | 29. C (175) | 46. D (29) |
| 13. C (141) | 30. C (174) | 47. A (34) |
| 14. B | 31. C (176) | 48. D (32) |
| 15. D | 32. B (178) | 49. C (9) |
| 16. C | 33. B (172) | 50. A (26) |
| 17. D | 34. B | |