

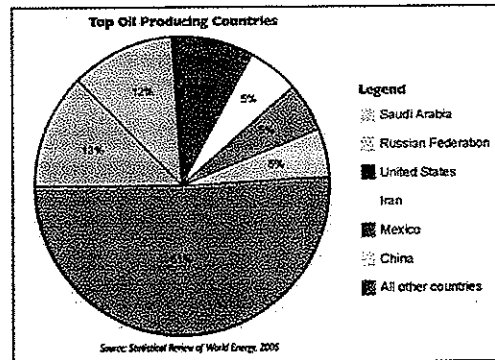
Place Contestant ID Label HERE  
BEFORE Contest Begins.



# Maps, Graphs, & Charts

## DISTRICT Contest

### Grades 6-8



**2017**

Score: \_\_\_\_\_

(Please do not open test until the signal is given to begin.)

# Farming Report

## Courtland Agricultural District III

County	Average Farm Size (in acres)	Primary Crops					
		Barley	Corn	Oats	Potatoes	Soybeans	Wheat
Andrews	1,270	Y	Y				Y
Chambers	218					Y	
Fisk	550			Y			
Monroe	823	Y	Y		Y	Y	
Ross	418		Y	Y			
Sumner	646		Y	Y			Y
Vincent	497		Y				Y

**Farming Report**

1. The average number of acres of a farm in Monroe County is  
A. 418. C. 646.  
B. 550. D. 823.
2. Which of these crops is important in Ross County?  
A. wheat C. oats  
B. soybeans D. potatoes
3. In which of these counties are the most different types of crops grown?  
A. Vincent C. Fisk  
B. Sumner D. Chambers
4. Average farm size is largest in which of these counties?  
A. Andrews C. Monroe  
B. Sumner D. Vincent
5. Which of the following crops are grown in the fewest counties?  
A. barley C. oats  
B. corn D. wheat
6. Which of these statements is true?  
A. The county with the largest farms also grows the most different kinds of crops.  
B. The average size of farms is larger in Fisk County than it is in Sumner County.  
C. Corn is grown in more of the counties than any of the other crops.  
D. Barley and soybeans are both grown in the same two counties.

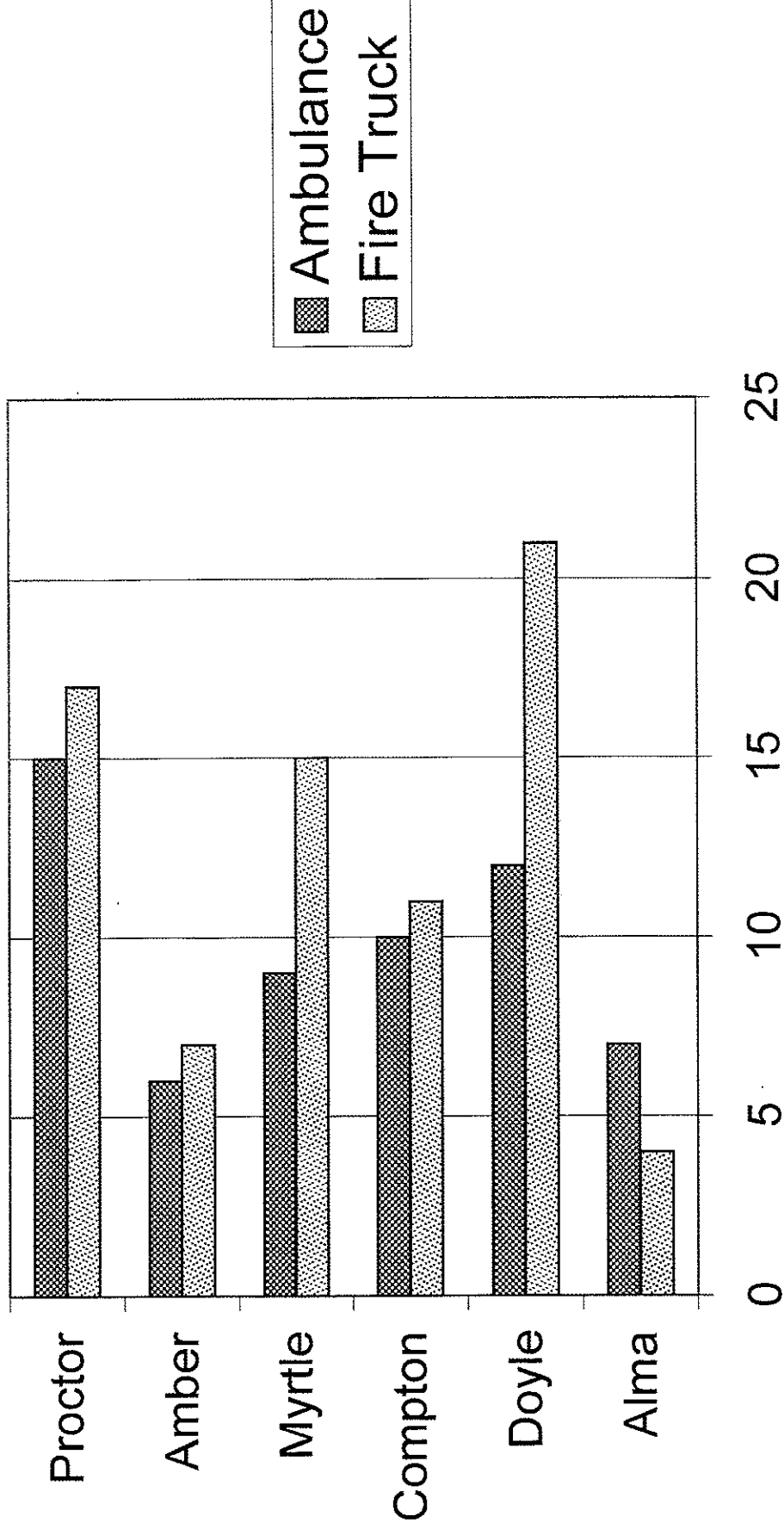
**Atlas questions - Europe**

7. Which of these countries does not share any border with Germany?  
A. Belgium C. Italy  
B. Poland D. Switzerland
8. Which of these Russian cities is largest?  
A. St. Petersburg C. Yaroslavl  
B. Tula D. Smolensk
9. Germany's climate is considered  
A. continental. C. mild.  
B. dry. D. polar.

# Regional Emergency Station

## County Service Report

Counties



Service Dispatches

10. How many feet above sea level is most of the land around London in the United Kingdom?
 

A. 0 to 500	C. 1,000 to 2,000
B. 500 to 1,000	D. 2,000 to 5,000
  
11. In which of these countries is more of the land desert or semi-desert?
 

A. Sweden	C. Great Britain
B. Spain	D. France
  
12. One metal resource found in Italy is
 

A. zinc.	C. silver.
B. tin.	D. manganese.
  
13. One European country that is not a member of the European Union is
 

A. Ireland	C. Norway
B. Greece	D. Portugal

### Regional Emergency Station

14. How many fire trucks did the Emergency Station send to Proctor County?
 

A. 20	C. 15
B. 17	D. 12
  
15. How many counties received fewer than 10 ambulances from the Emergency Station?
 

A. 0	C. 2
B. 1	D. 3
  
16. Which of these counties received more ambulances than fire trucks?
 

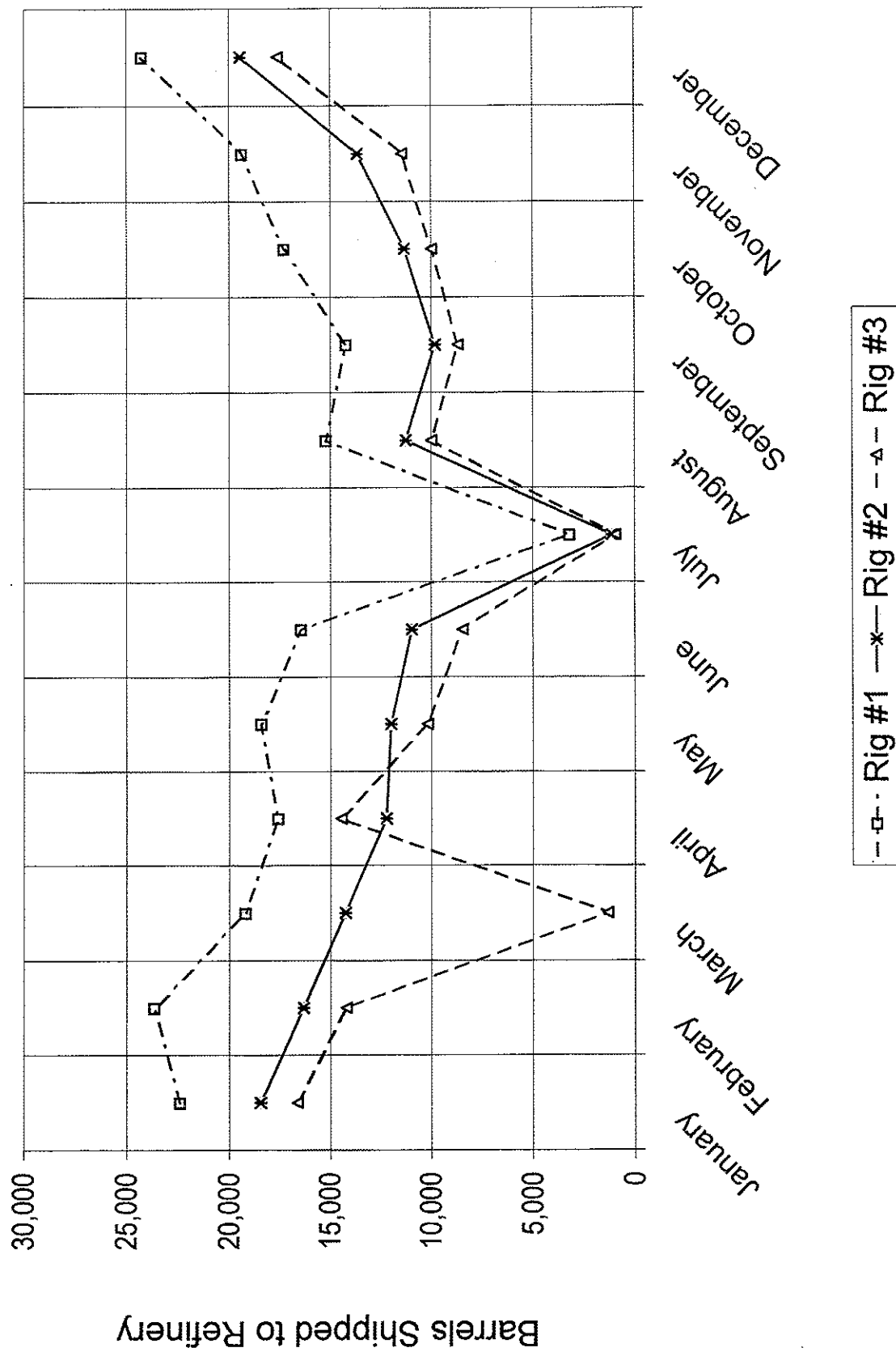
A. Doyle	C. Alma
B. Compton	D. Proctor
  
17. Which of these counties received 15 fire trucks from the Emergency Station?
 

A. Proctor	C. Compton
B. Doyle	D. Myrtle
  
18. Which of the following counties had the biggest difference between the number of ambulances dispatched and the number of fire trucks?
 

A. Alma	C. Compton
B. Amber	D. Proctor
  
19. Which of these statements is false?
 

A. None of the counties received the same number of ambulances as it did fire trucks.
B. The Emergency Station sent 11 ambulances to Compton County.
C. Amber County received more fire trucks than Alma County did.
D. The Emergency Station sent more than 20 service dispatches to Myrtle County.

# Desmond Islands Oil Production



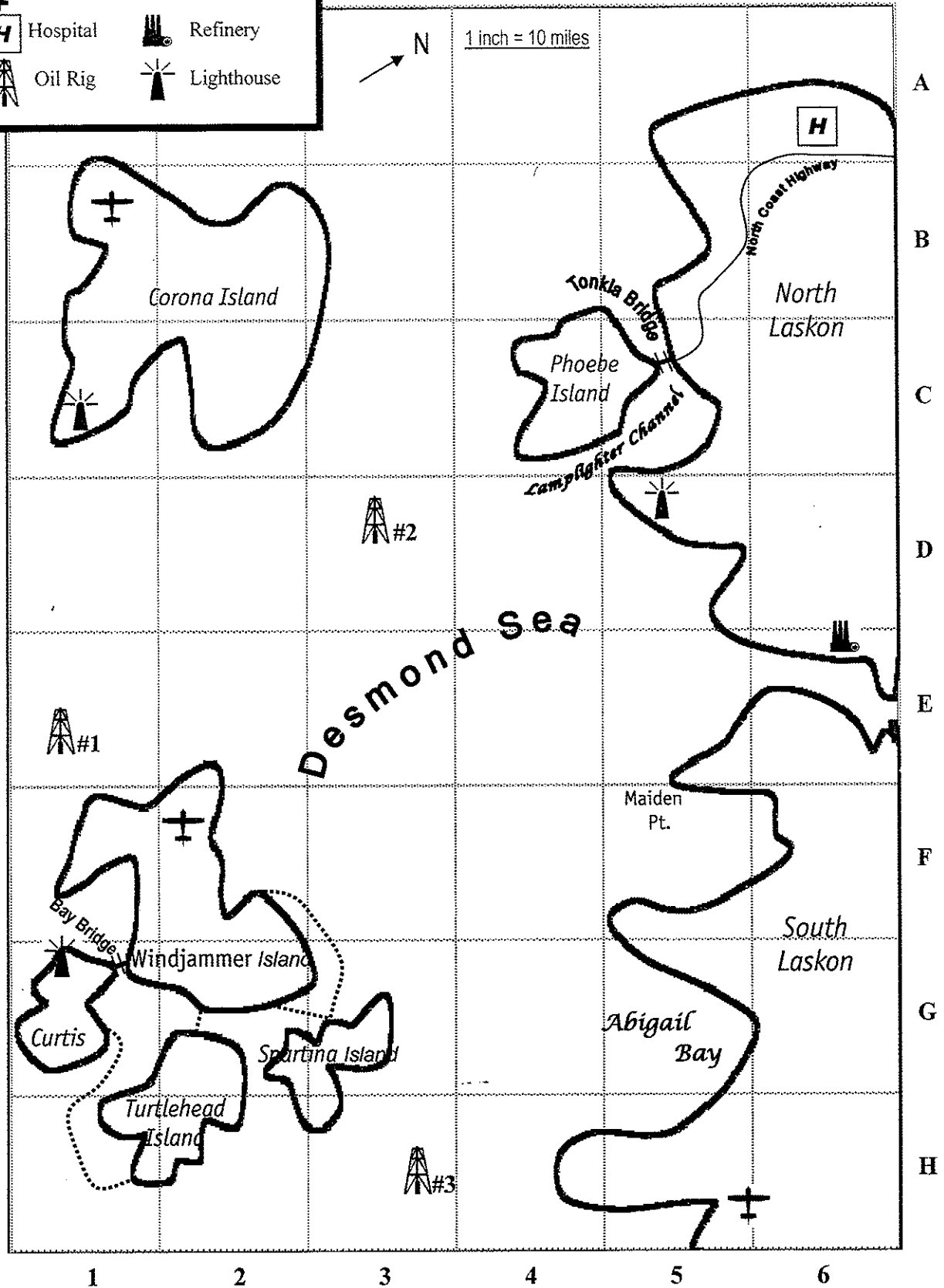
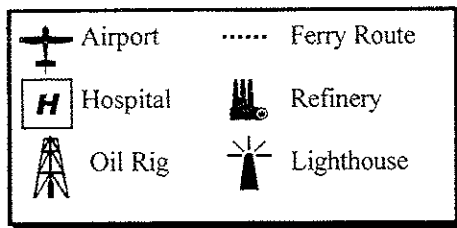
## Desmond Islands Oil Production

20. In how many months did Rig #1 ship fewer than 15,000 barrels of oil to the refinery?
- A. 0 C. 2  
B. 1 D. 3
21. In which of these months did Rig #3 produce more oil than Rig #2 did?
- A. January C. June  
B. April D. October
22. Approximately how many barrels of oil did Rig #2 ship to the refinery in September?
- A. 5,000 C. 10,000  
B. 9,000 D. 14,000
23. In which of the following months did production at Rig #1 increase most from the month before?
- A. December C. May  
B. November D. March
24. In which of the following months was the most oil shipped from Rig #2?
- A. November C. May  
B. August D. March
25. The largest amount of oil shipped from Rig #3 in any one month was approximately
- A. 24,000 barrels. C. 19,000 barrels.  
B. 16,000 barrels. D. 17,500 barrels.
26. In which of these months did production decrease from the month before at all three rigs?
- A. February C. June  
B. May D. October
27. Approximately how many more barrels of oil did Rig #1 ship in its biggest month of production than it did in its smallest month?
- A. 24,000 C. 14,000  
B. 21,000 D. 10,000

## Atlas questions - Australia and Oceania

28. The direction from Sydney, Australia, to Melbourne is
- |    |            |    |            |
|----|------------|----|------------|
| A. | southwest. | C. | southeast. |
| B. | northeast. | D. | northwest. |
29. The height above sea level of Uluru, also known as Ayers Rock, is
- |    |              |    |                   |
|----|--------------|----|-------------------|
| A. | 867 feet.    | C. | 2844 feet.        |
| B. | 2844 meters. | D. | over 1500 meters. |

# Desmond





30. Longitude 130°E intersects Latitude 20°S in the  
 A. island of New Guinea. C. Tanami Desert.  
 B. Great Dividing Range mountains. D. Indian Ocean.
31. Most of the South Island of New Zealand receives \_\_\_\_\_ inches of precipitation each year.  
 A. 10 to 20 C. 40 to 80  
 B. 20 to 40 D. over 80
32. The people indigenous to the New Zealand Islands are part of the Polynesian group. They are called  
 A. Hawaiians. C. Samoans.  
 B. Maori. D. Tahitians.
33. New Zealand is separated from Australia by the \_\_\_\_\_ Sea.  
 A. Timor C. Coral  
 B. Tasman D. Arafura

### Desmond

34. Which of these features is found along the North Coast Highway?  
 A. airport C. lighthouse  
 B. hospital D. refinery
35. Approximately how far is the lighthouse at Lamplighter Channel from the one on Corona Island?  
 A. 4 miles C. 40 miles  
 B. 5 miles D. 50 miles
36. The map feature found in grid section D3 is  
 A. Corona Island lighthouse. C. Abigail Bay.  
 B. Phoebe Island. D. Oil Rig #2.
37. Which of these locations is closest to 30 miles from the refinery?  
 A. Tonkla Bridge C. Maiden Point  
 B. Oil Rig #2 D. Windjammer Island Airport
38. Which of these other islands is connected to Curtis island by a ferry?  
 A. Windjammer C. Spartina  
 B. Phoebe D. Turtlehead
39. Which island has both a lighthouse and an airport?  
 A. Windjammer C. Curtis  
 B. Spartina D. Corona
40. Which of the following locations is farthest south?  
 A. Oil Rig #1 C. Maiden Point  
 B. Windjammer airport D. Oil Rig #3

-

### General Geography questions

51. What is the name of the island claimed by both New Jersey and New York that was once the main point of entry to the United States for people immigrating from Europe?
- A. Ellis C. Nantucket  
B. Long D. Staten
52. Easter Island in the Pacific Ocean belongs to the South American country of
- A. Argentina. C. Chile.  
B. Brazil. D. Peru.
53. The world's second highest mountain, K2 (or Godwin Austen), is located in
- A. Canada. C. Peru.  
B. China. D. the United States.
54. The commercial area nicknamed Silicon Valley is located in the state of
- A. New York. C. New Jersey.  
B. Texas. D. California.
55. The capital city of the Bahamas is located on the island of
- A. New Providence. C. Eleuthera.  
B. Grand Bahama. D. Andros.
56. Which is the second largest of the Great Lakes between Canada and the United States?
- A. Superior C. Huron  
B. Michigan D. Erie
57. Frozen ground in Arctic areas where soil temperatures remain below freezing most or all of the year is called
- A. tundra. C. an ice shelf.  
B. a glacier. D. permafrost.
58. Which of these nations is one of the founding members of the Organization of Petroleum Exporting Countries (OPEC)?
- A. Venezuela C. Russia  
B. United Arab Emirates D. Libya
59. Which of these current states was part of the 1803 Louisiana Purchase?
- A. Arizona C. Nebraska  
B. Mississippi D. Tennessee
60. The Prime Meridian passes through a borough in the city of
- A. Paris. C. Moscow.  
B. New York. D. London.

61. Which of these rivers is a tributary of the Congo River in Africa?  
A. Nile C. Niger  
B. Kasai D. Zambezi
62. About half the people in South America live in  
A. Brazil. C. Columbia.  
B. Chile. D. Venezuela.
63. Which city is the westernmost point on the Erie Canal?  
A. Akron C. Cincinnati  
B. Buffalo D. Syracuse
64. When the time is 7:00 am in New York City, what time is it in Moscow?  
A. 7:00 pm C. 12 noon  
B. 3:00 am D. 3:00 pm
65. The most famous library of ancient times was located in the Egyptian city of  
A. Cairo. C. Alexandria.  
B. Port Said. D. Giza.
66. The official language on the Caribbean island of Martinique is  
A. English. C. Portugese.  
B. French. D. Spanish.
67. Which of these states produces the most peanuts?  
A. Georgia C. Texas  
B. Oregon D. Utah
68. One of the world's largest hydroelectric dams is on the Angara River at Bratsk in  
A. Germany. C. Russia.  
B. Poland. D. the United Kingdom.
69. A major deposit of the metal nickel was discovered on the mainland of Newfoundland near which body of water?  
A. Hudson Bay C. Baffin Bay  
B. Chukchi Sea D. Labrador Sea
70. Which of these lakes is found in the state of Utah?  
A. Goose C. Powell  
B. Mead D. Tahoe
71. The Bab el Mandeb, a strait between the Arabian Peninsula and mainland Africa, connects the Gulf of Aden to the  
A. Arabian Sea. C. Persian Gulf.  
B. Indian Ocean. D. Red Sea.

72. A grizzly bear is pictured on the state flag of \_\_\_\_\_, although the last wild grizzly in the state was killed almost a century ago.
- |               |             |
|---------------|-------------|
| A. Arkansas   | C. Florida  |
| B. California | D. Oklahoma |
73. Cape Breton Highlands National Park hosts an annual celebration of the Scottish heritage of people living in which eastern Canadian province?
- |                 |                    |
|-----------------|--------------------|
| A. Alberta      | C. Nova Scotia     |
| B. Newfoundland | D. Yukon Territory |
74. Which of these countries in Asia is home to the Manchu ethnic group?
- |          |             |
|----------|-------------|
| A. China | C. Malaysia |
| B. India | D. Russia   |
75. Gold is an important export for the Pacific Island country of \_\_\_\_\_, where the population speaks more than 700 distinct languages.
- |                     |                |
|---------------------|----------------|
| A. Indonesia        | C. Philippines |
| B. Papua New Guinea | D. New Zealand |

CONTESTANT ID#: \_\_\_\_\_

GRADE LEVEL: \_\_\_\_\_

# PSIA Maps, Graphs & Charts Contest

## Grades 6-8 – 2017

### ANSWER SHEET

Page number references in parentheses are found only in the 2014 or NEWER editions of the *Nystrom Desk Atlas*. **Scoring:** +5 for each correct answer; -2 for each incorrect answer. No points are deducted for skipped or unanswered items. Deduct 2 points for erasures/mark-outs not resulting in a correct answer.

- |           |           |           |                       |
|-----------|-----------|-----------|-----------------------|
| 1. _____  | 20. _____ | 39. _____ | 58. _____             |
| 2. _____  | 21. _____ | 40. _____ | 59. _____             |
| 3. _____  | 22. _____ | 41. _____ | 60. _____             |
| 4. _____  | 23. _____ | 42. _____ | 61. _____             |
| 5. _____  | 24. _____ | 43. _____ | 62. _____             |
| 6. _____  | 25. _____ | 44. _____ | 63. _____             |
| 7. _____  | 26. _____ | 45. _____ | 64. _____             |
| 8. _____  | 27. _____ | 46. _____ | 65. _____             |
| 9. _____  | 28. _____ | 47. _____ | 66. _____             |
| 10. _____ | 29. _____ | 48. _____ | 67. _____             |
| 11. _____ | 30. _____ | 49. _____ | 68. _____             |
| 12. _____ | 31. _____ | 50. _____ | 69. _____             |
| 13. _____ | 32. _____ | 51. _____ | 70. _____             |
| 14. _____ | 33. _____ | 52. _____ | 71. _____             |
| 15. _____ | 34. _____ | 53. _____ | 72. _____             |
| 16. _____ | 35. _____ | 54. _____ | 73. _____             |
| 17. _____ | 36. _____ | 55. _____ | 74. _____             |
| 18. _____ | 37. _____ | 56. _____ | 75. _____             |
| 19. _____ | 38. _____ | 57. _____ | OFFICIAL SCORE: _____ |

**Score:    Initials**

Grader 1: \_\_\_\_\_

Grader 2: \_\_\_\_\_

Grader 3: \_\_\_\_\_

**Contest Director ONLY:** AFTER being scored by at least 2 graders, place this answer sheet with the contestant's identified test paper, on which the Contestant ID label has been affixed.

**PSIA Maps, Graphs & Charts Contest**  
**Grades 6-8 – DISTRICT – 2017**  
**ANSWER KEY**

Page number references in parentheses are found only in the **2014** or **NEWER** editions of the *Nystrom Desk Atlas*. **Scoring:** +5 for each correct answer; -2 for each incorrect answer. No points are deducted for skipped or unanswered items. Deduct 2 points for erasures/mark-outs not resulting in a correct answer.

1. D	20. C	39. D	58. A
2. C	21. B	40. A	59. C
3. B	22. C	41. B (8)	60. D
4. A	23. A	42. B (20)	61. B
5. A	24. D	43. C (43)	62. A
6. C	25. D	44. B (16)	63. B
7. C (134)	26. C	45. D (19)	64. D
8. A (135)	27. B	46. D (29)	65. C
9. C (140)	28. A (172)	47. A (34)	66. B
10. A (138)	29. C (175)	48. D (32)	67. A
11. B (136)	30. C (174)	49. C (9)	68. C
12. D (142)	31. C (176)	50. A (26)	69. D
13. C (141)	32. B (178)	51. A	70. C
14. B	33. B (172)	52. C	71. D
15. D	34. B	53. B	72. B
16. C	35. C	54. D	73. C
17. D	36. D	55. A	74. A
18. A	37. B	56. C	75. B
19. B	38. D	57. D	